

ENVIRONMENTAL JUSTICE TOOLS USER GUIDE

2023



Fair Shake[®]
Environmental Legal Services

This resource is part of Fair Shake Environmental Legal Service's
Community Democracy River.

For more information and additional resources, tools, and levers, visit:
<https://www.fairshake-els.org/community-organizing-resources>.

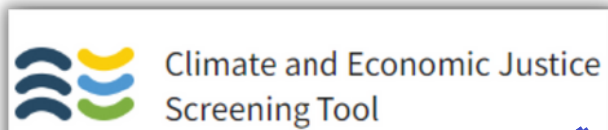
TABLE OF CONTENTS

What is this Guide?	<u>3</u>
Why Should I Use This Guide?	<u>4</u>
How Do These Tools Work?	<u>5</u>
Understanding Census Tract Codes	<u>6</u>
Using the Climate & Economic Justice Screening Tool	<u>7</u>
What Is This Data?	<u>8</u>
Issue Table	<u>9</u>
Using the City Builder Tool	<u>11</u>
What Is This Data?	<u>12</u>
Issue Table	<u>13</u>
Using the Congressional District Health Dashboard Tool	<u>14</u>
Issue Table	<u>15</u>
Why Are These Issues Present?	<u>18</u>
So, What is the Issue?	<u>20</u>
What Now?	<u>21</u>
Still Have Questions?	<u>22</u>

WHAT IS THIS GUIDE?

This user guide will teach you how to use mapping tools to find out more information about your community.

This guide will focus on three different tools. Each tool can be used alone, or can be used together to provide a full picture:



- Shows climate, environment, and some health issues.
- How the federal government defines "Environmental Justice Community"
- Identifies which communities may be eligible for Environmental Justice funding opportunities.



- Shows "lived environment" - things like walkability, air quality, heat index, green space, and closeness to grocery stores and health care facilities.



- Shows health outcomes for states for each congressional district.

Click on any of the buttons to launch the tool



WHY SHOULD I USE THIS GUIDE?

COMMUNITY DEMOCRACY RIVER

GET TO KNOW ENVIRONMENTAL JUSTICE INITIATIVES +
LEARN ABOUT YOUR COMMUNITY'S HEALTH AND WELLBEING.

- Learning more about the health and wellbeing of your town can help you know what is going well in your town, and what needs to be different so that everyone can be happy and healthy.
- The federal government and some states have different regulations and initiatives that are set up to help “environmental justice communities” – areas that have been marginalized, underserved, and overburdened by pollution.

River point: Upriver – learning more about your community's health and wellbeing and getting to know environmental justice initiatives is helpful at anytime.

These activities can promote other actions midriver to create solutions to mitigate environmental justice concerns.

Specifically:

- Grow strong relationships.
- Tell your story.
- Co-create community vision.
- Update or co-create your municipality's zoning laws, comprehensive plan, ordinances, or resolutions to meet community vision.
- Pass ordinances or resolutions to meet community vision.
- Engage your relationships and community.
- Monitor the health of your air, water, and lived environment.
- Develop strategic messages.
- Make verbal and/or written comments about the things you care about at public hearings.
- Make your story and message heard.

Strengths & Skills that can pull lever:

- Relationship Building & Feeling
- Executing & Doing
- Strategy & Thinking



HOW DO THESE TOOLS WORK?

These tools use census tract or Congressional District information to provide data on many different topics like:

- Pollution & Environmental Issues
- Economic Data
- Health Data
- Housing Data
- Transportation Access
- Healthcare Access
- Workforce Data
- Internet Access



UNDERSTANDING CENSUS TRACT CODES

A census tract is a subunit of a county used for gathering data by the U.S. Census Bureau.

Census tracts are labeled with an 11-digit code.

The 11-digit code starts with 2 numbers showing which state the tract is in. The table to the right shows the state codes.

The next 3 numbers show which county the the tract is in. You can find a list of your state's county codes [here](#).

The last 6 numbers show the specific area the census tract is in. You can use this [tool](#) and these [instructions](#) to find the 6-digit codes within your county:



Name	FIPS State Numeric Code	Name	FIPS State Numeric Code
Alabama	01	Missouri	29
Alaska	02	Montana	30
Arizona	04	Nebraska	31
Arkansas	05	Nevada	32
California	06	New Hampshire	33
Colorado	08	New Jersey	34
Connecticut	09	New Mexico	35
Delaware	10	New York	36
District of Columbia	11	North Carolina	37
Florida	12	North Dakota	38
Georgia	13	Ohio	39
Hawaii	15	Oklahoma	40
Idaho	16	Oregon	41
Illinois	17	Pennsylvania	42
Indiana	18	Rhode Island	44
Iowa	19	South Carolina	45
Kansas	20	South Dakota	46
Kentucky	21	Tennessee	47
Louisiana	22	Texas	48
Maine	23	Utah	49
Maryland	24	Vermont	50
Massachusetts	25	Virginia	51
Michigan	26	Washington	53
Minnesota	27	West Virginia	54
Mississippi	28	Wisconsin	55
		Wyoming	56

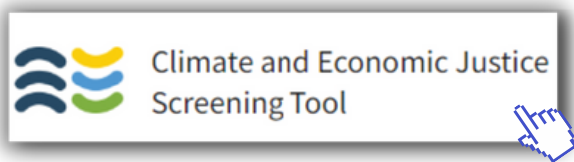
Click on the button to the right to find more information about census tract codes

[LEARN MORE](#)

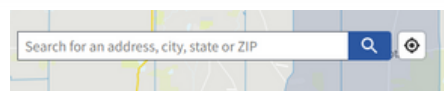


USING THE CLIMATE AND ECONOMIC JUSTICE SCREENING TOOL

1. Visit the Climate & Economic Justice Screening Tool



2. Type your address, city, or zip code into the search bar in the tool



3. If data exists for your community, click on the shaded area. For example, see the map view after searching for the City of Warren Mayor's Office at this address: 391 Mahoning Ave NW, Warren, OH 44483

4. To the right of the map, you can see the tract information, including the census tract number, population, & information on various topics, like energy, housing, etc.

A screenshot of the map view in the tool. The map shows a shaded area in Warren, OH, with a search bar at the top containing "391 Mahoning Ave NW, Warren, OH 44483". To the right of the map is a sidebar with the following information:

- Tract information**
 - Number: 39155920800
 - County: Trumbull County
 - State: Ohio
 - Population: 1,901
- Tract demographics**
 - Race / Ethnicity ([show](#))
 - Age ([show](#))
- Identified as disadvantaged?**
 - YES**
 - This tract is considered disadvantaged because it meets more than 1 burden threshold AND the associated socioeconomic threshold.
 - [Send feedback](#)
- Climate change** +
- Energy** +
- Health** +
- Housing** +
- Legacy pollution** +
- Transportation** +
- Water and wastewater** +
- Workforce development** +



WHAT IS THIS DATA?

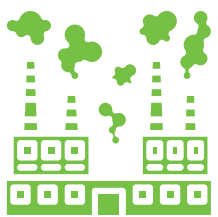
This map shows what percentile your census tract is in for categories like:

- Projected Flood Risk
- Income
- Transportation Barriers
- Air Pollution
- Health Risks

Percentiles show how your census tract ranks in these categories when compared to the rest of the Nation.

For example, a community with a projected flood risk in the 90th percentile has a higher flood risk than 90% of other communities in the Nation.

What issues does your community have? Use the tables on the next pages to take notes.



Issue	Is this an issue for your community? Why do you think that is?
Expected Agriculture Rate Loss	
Expected Building Loss Rate	
Expected Population Loss Rate	
Projected Flood Risk	
Projected Wildfire Risk	
Energy Cost	
PM 2.5 in the Air	
Asthma Rate	
Diabetes Rate	
Heart Disease Rate	
Low Life Expectancy	
Historic Underinvestment	
Housing Cost	
Lack of Green Space	
Lack of Indoor Plumbing	
Lead Paint	
Abandoned Mine Land	



Issue	Is this an issue for your community? Why do you think that is?
Formerly Used Defense Sites	
Proximity to Hazardous Waste Facilities	
Proximity to Risk Management Plan Facilities	
Proximity to Superfund Sites	
Diesel Particulate Matter Exposure	
Transportation Barriers	
Traffic Proximity and Volume	
Underground Storage Tanks and Releases	
Wastewater Discharge	
Linguistic Isolation	
Low Median Income	
Poverty	
Unemployment	
High School Education	

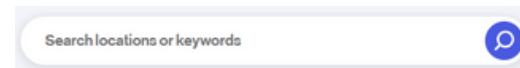


USING THE CITY BUILDER TOOL

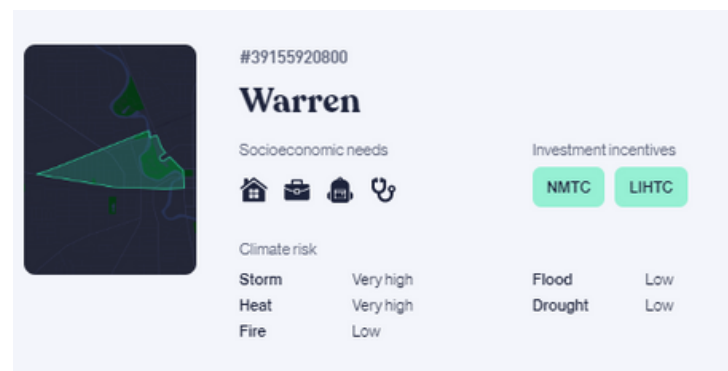
Now that you know your census tract number, you can use it to access information in the City Builder tool



1. Type your city into the search bar on the tool




2. Using the census tract number you found from the Climate & Economic Justice Screening Tool, find your census tract within the list produced by the City Builder tool



3. Click on your census tract to see more information.

This tool provides information about internet access, grocery store and healthcare access, and the walkability of the neighborhood.

This tool also provides information on the heat risk, the greenspace, and a graph on the air quality index over the span of a year.

Using this tool, you can also compare this census tract with other nearby tracts using the Compare Tool by clicking this icon within the tool: 



WHAT IS THIS DATA?



This tool shows areas of socioeconomic need and some climate data for your census tract.

What issues does your community have? Use the table on the next page to take notes.



Issue	Is this an issue for your community? Why do you think that is?
Grocery Availability	
Healthcare Access	
Housing Affordability	
Internet Access	
Workforce Participation	
Neighborhood Walkability	
Student Engagement	
Water Infrastructure	
Storm Risk	
Heat Risk	
Drought Risk	
Fire Risk	
Flood Risk	
Air Quality Index	

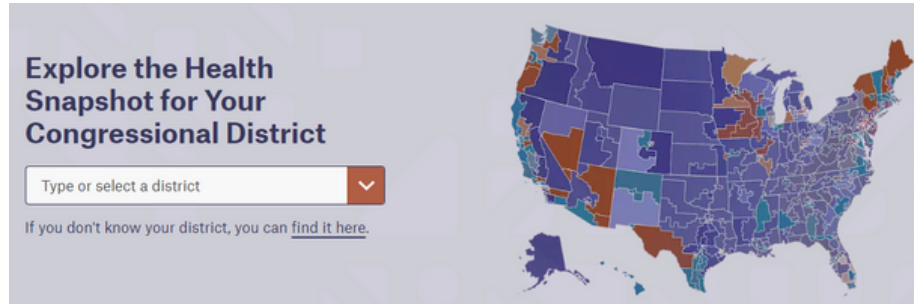


USING THE CONGRESSIONAL DISTRICT HEALTH DASHBOARD TOOL

You can use the Congressional District Health Dashboard to find information about the congressional district your community is in.



1. Select your Congressional District within the tool. The tool provides directions on how to find your Congressional District.



2. View the metrics that this tool provides. This tool provides a wide variety of information on your Congressional District including:

- Number of teen births
- Smoking rates
- Physical inactivity
- Deaths due to cancer or cardiovascular disease

This tool provides data on many different metrics, but it does not provide information about your specific community. It is still a useful tool to find out who your Congressional Representatives are, and what issues your district faces.

What issues does your district have? Use the tables on the next pages to take notes.



Issue	Is this an issue for your community? Why do you think that is?
Air Pollution - Particulate Matter	
Binge Drinking	
Breast Cancer Deaths	
Broadband Connection	
Cardiovascular Disease Deaths	
Children in Poverty	
Colorectal Cancer Deaths	
COVID Local Risk Index	
Dental Care	
Diabetes	
Firearm Homicides	
Firearm Suicides	



Issue	Is this an issue for your community? Why do you think that is?
Frequent Mental Distress	
Frequent Physical Distress	
High Blood Pressure	
High School Completion	
Housing with Potential Lead Risk	
Income Inequality	
Lead Exposure Risk Index	
Life Expectancy	
Limited Access to Healthy Foods	
Low Birthweight	
Neighborhood Racial/Ethnic Segregation	
Obesity	



Issue	Is this an issue for your community? Why do you think that is?
Opioid Overdose Deaths	
Physical Inactivity	
Premature Deaths (All Causes)	
Prenatal Care	
Preventive Services, 65+	
Racial/Ethnic Diversity	
Rent Burden	
Routine Checkup, 18+	
Smoking	
Teen Births	
Unemployment	
Uninsured	



WHY ARE THESE ISSUES PRESENT?

You've reviewed what issues your community has -- now consider why these issues are present and what causes them.

Do some areas in your community have more problems than others?
Why do you think that is?

Sometimes environmental or economic issues can lead to even more problems. Can you identify any other problems these issues are causing?

What solutions do you want to see to these issues?



WHY ARE THESE ISSUES PRESENT?

What assets or strengths does your community have that can help combat these issues? What can you do to help?

Were you surprised by any of the issues your community has?

How do you feel after learning about your community's issues?



SO WHAT IS THIS ISSUE?

What is environmental justice?

A high number of environmental issues, within communities that have large racial and ethnic minority populations and/or low median income signal that communities are in need of environmental justice.

Consider viewing these resources to learn more about environmental justice.

Short Read:

[Environmental Justice: A Path Forward?](#)

Resources for Kids:

[Environmental Justice](#)

Short Read:

[What is Environmental Justice?](#)

Video:

[Environmental Justice, Explained](#)



WHAT NOW?

Identifying Community Issues:

The first step of solving problems is identifying them!

Issue example: Historic Underinvestment

Imagine that you have discovered that your community has experienced historic underinvestment.

- Where are you in the River?
 - River Point:
 - Solutions are stronger when implemented up- and mid-river:
 - Authentic relationship building
 - Co-creating community vision to gauge interest in the project
 - Requiring ordinances to address the issue
 - Being a part of local municipality
 - Building a watchdog capacity to monitor zoning and land use decisions
 - Engaging and energizing relationships
 - Attending meetings & public hearings, and reviewing local agendas & public notices
- What Skills and Strengths Can Help?
 - Relationship Building & Feeling
 - Influencing & Motivating
 - Thinking & Strategy
 - Doing & Executing
- What solutions can address this issue?
 - Would increased green space like community gardens or parks help?
 - Would increasing pride in the community through public art help?
 - Would requiring developers to sign Community Benefits Agreements help?



STILL HAVE QUESTIONS?

After finding out more about your community's environmental, economic, and social issues, you can visit the River Point [tool](#) to learn more about opportunities to get involved in your community and local government to help solve some of these issues.

You can also reach out to Fair Shake Environmental Legal Service's Community Democracy Program to find out more information about civic engagement.

